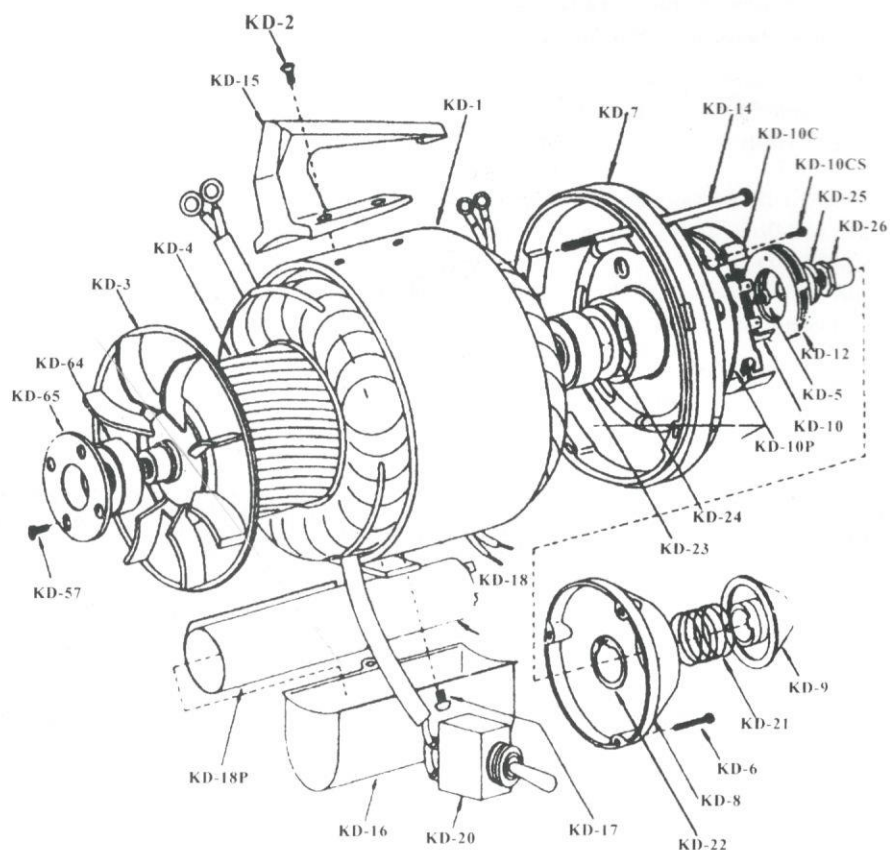
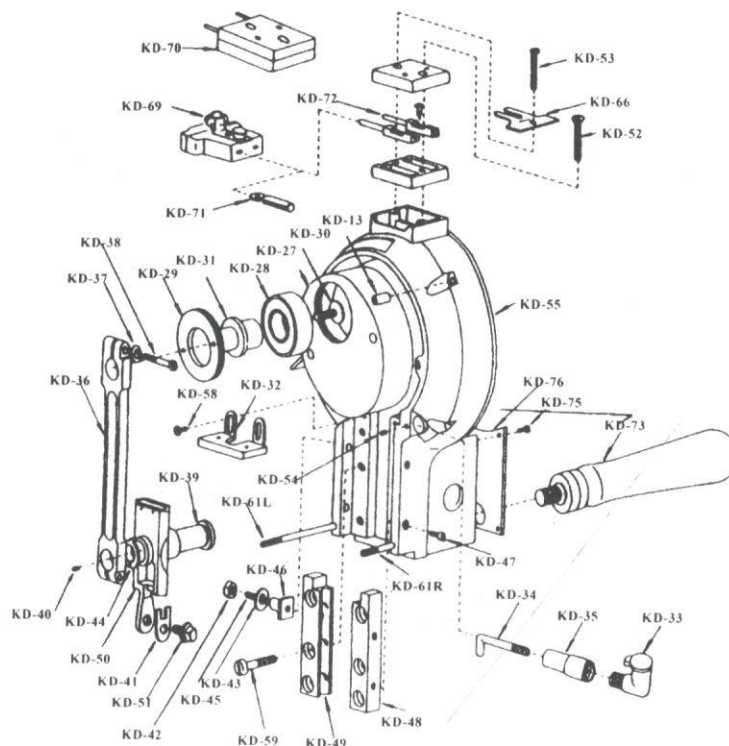


MOTOR & HOUSING MECHANISM



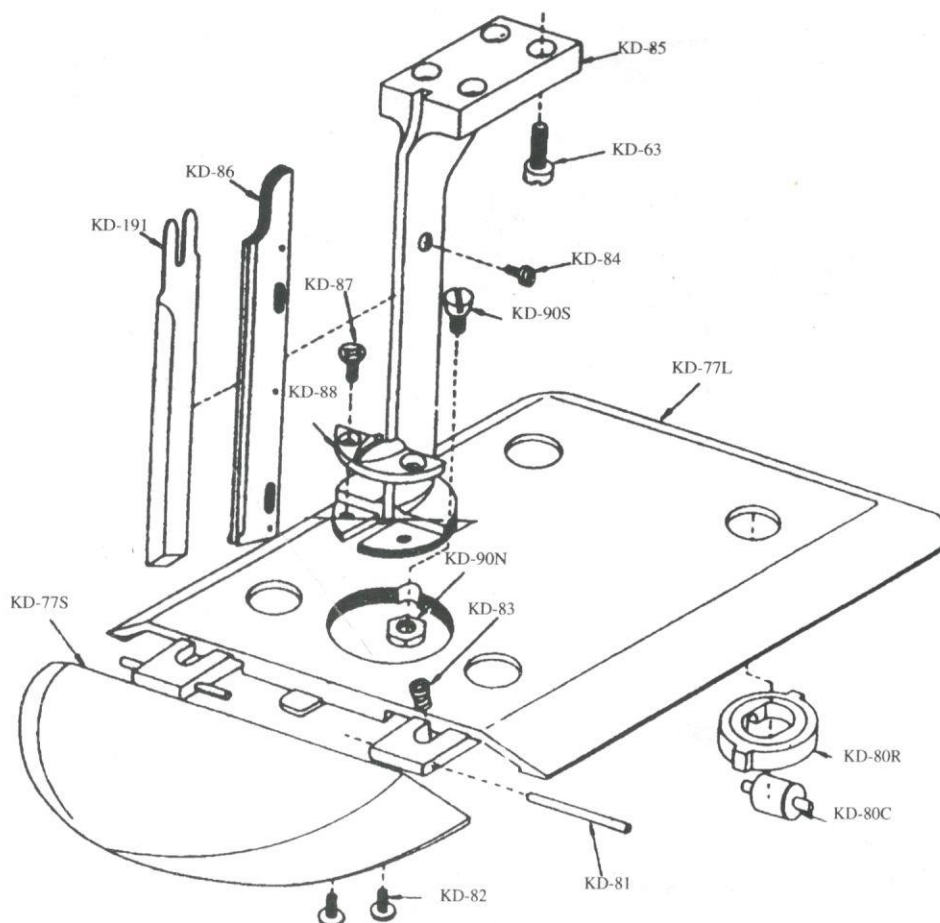
Part NO.	Name of parts	Part NO.	Name of parts
KD-1	Capacitor-Stator	KD-15	Carring Handle
KD-2	Carrying Handle Screws	KD-16	Capacitor Cover
KD-3	Rotor Fan	KD-17	Screw for Capacitor Cover
KD-4	Rotor With Shaft	KD-18	Capacitor
KD-5	Cut-Out Switch to Bearing Screw	KD-18P	Paper
KD-6	Dust Cap Screw	KD-20	Switch
KD-7	Rear Bearing Housing	KD-21	Clutch Spring
KD-8	Dust Cap	KD-22	Retaining Ring
KD-9	Turning Knob	KD-23	Rear Ball Bearing
KD-10	Cut-Out Switch	KD-24	Rear Ball Bearing Spring Washer
KD-10P	Insulated Plate	KD-25	Clutch Nut
KD-10C	Insulated Cover	KD-26	Shaft Lock Nut
KD-10CS	Set Screw for Insulated Cover	KD-57	Front Ball Bearing Retainer Screw
KD-12	Automatic Cut-Out	KD-64	Front Ball Bearing
KD-14	Front to Rear Bearing Screw	KD-65	Front Ball Bearing Retainer

FRONT COVER MECHANISM



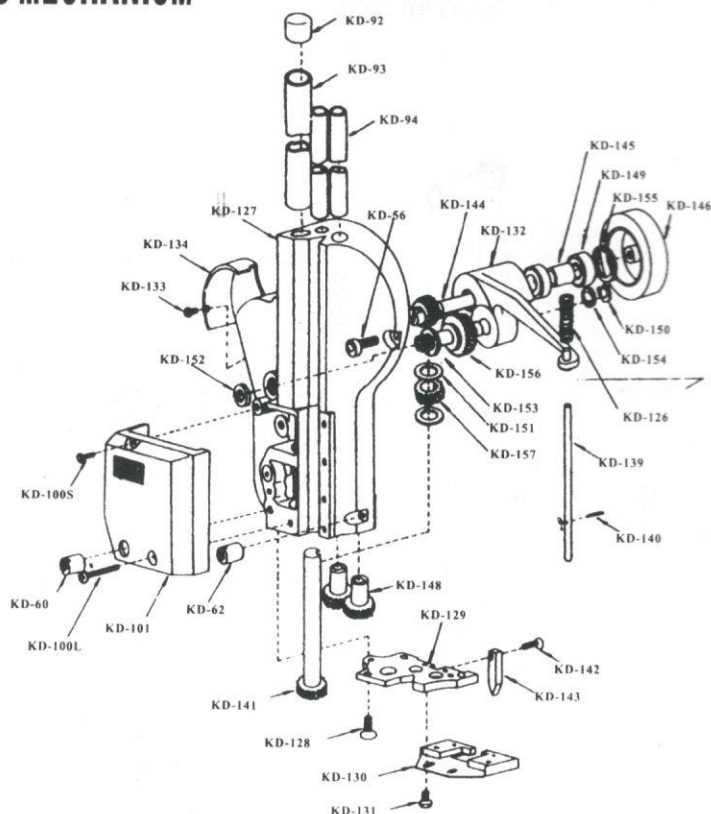
Part NO.	Name of parts	Part NO.	Name of parts
KD-13	Front to Rear Bearing Nut	KD-47	Guide Lock Screw
KD-27	Crank	KD-48	R.H.Guide
KD-28	Crank Ball Bearing	KD-49	L.H.Guide
KD-29	Crank Ball Bearing Lock Nut	KD-50	Cross Head
KD-30	Screw for Brag Shaft	KD-51	Knife Lock Bolt
KD-31	Shaft for Ball Bearing	KD-52	Terminal Block Screw
KD-32	Oil Pad Holder	KD-53	Ground Clip Screw
KD-33	Oil Cup	KD-54	Set Screw
KD-34	Oil Tube for Wrist Pin(Copper)	KD-55	Front Bearing Housing
KD-35	Oil Tube for Wrist Pin	KD-58	Oil Pad Holder Screw
KD-36	Connecting Rod	KD-59	Guide Hold Down Screw
KD-37	Shakeproof Washer	KD-61L	Stud Lower L.H.Mountaing(L)
KD-38	Connecting Rod Clamp Screw	KD-61R	Stud Lower L.H.Mountaing(R)
KD-39	Wrist Pin	KD-66	Ground Clip
KD-40	Wrist Pin Plug	KD-69	Attachment Plug (Complete)
KD-41	Knife Lock Washer	KD-70	Tetminal Block (Complete)
KD-42	Nuts for Guide Screw	KD-71	Terminal Sleeve
KD-43	Guide Washer	KD-72	Terminal Contact With Pin
KD-44	Connecting Rod Washer	KD-73	Operating Handle
KD-45	Guide Adjusting Screw	KD-75	Switch Cover Screw
KD-46	Guide Adjusting Nut	KD-76	Switch Cover

STANDARD & BASE PLATES



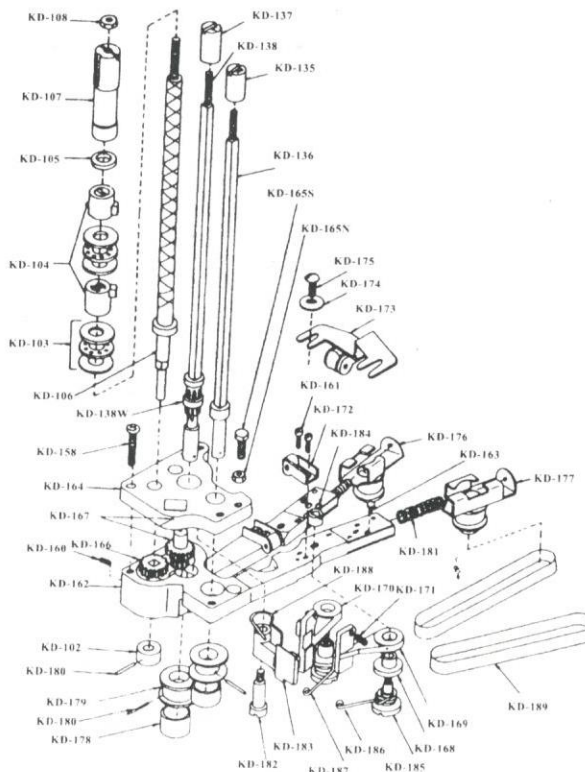
Part NO.	Name of parts	Part NO.	Name of parts
KD-63	Standard-to-Bearing Screw	KD-88	Throat Plate
KD-77S	Plate Wing	KD-90S	Plate Screw
KD-77L	Plate	KD-90N	Plate Nut
KD-80C	Roller	KD-191	Knife
KD-80R	Rubber		
KD-81	Hinge Pin Short		
KD-82	Hinge Pin Clamp Screw		
KD-83	Plate Wing Tension Spring		
KD-84	Knife Slide Screw		
KD-85	Standard		
KD-86	Knife Slide		
KD-87	Screw for Throat Plate		

SHARPENER HOUSING MECHANISM

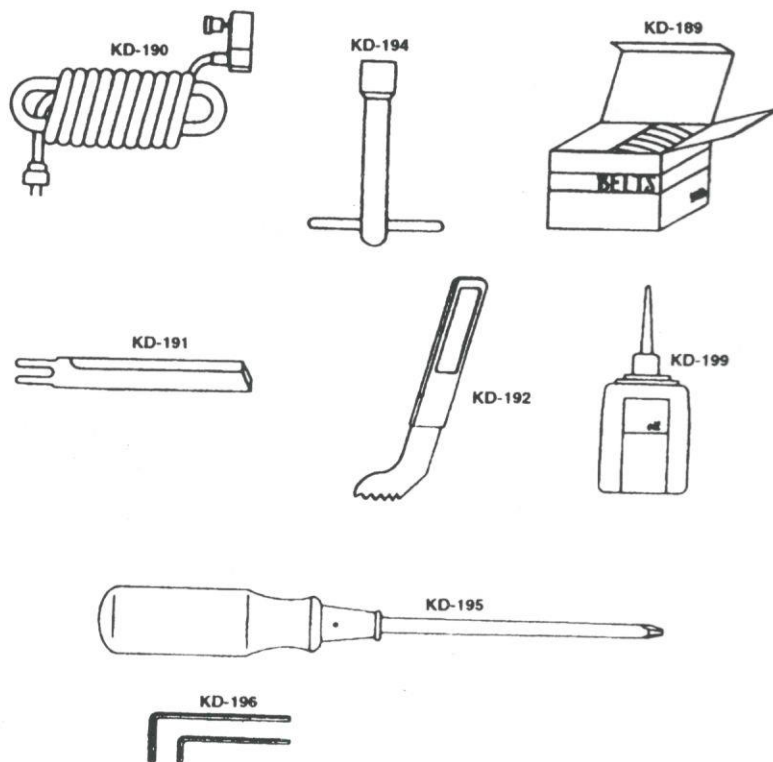


Part NO.	Name of parts	Part NO.	Name of parts
KD-56	Sharpener Hold Down Screw	KD-139	Push Rod
KD-60	Lower L.H.Sharpener	KD-140	Roll Pin for Push Rod
	Hold down Nut	KD-141	Driver Shaft With Gear
KD-62	Stud,Guide Rod Brachet	KD-142	Screw for Spreader Pin
KD-92	Cap for Tube	KD-143	Spreader Pin
KD-94	Driving Shaft	KD-144	Gear & Shaft
KD-93	Right and Left Hand Follower	KD-145	Bearing for Gear
KD-100S	Screw for Cover(S)	KD-146	Rubber Driver & Driver Pulley
	Screw for Cover(L)	KD-148	Spur Gear
KD-100L	Cover Over Can	KD-149	Ball Bearing for Crank
KD-101	Spring for ell Crank	KD-150	Retaining Ring
KD-126	Sharpener Housing	KD-151	Thrust Washer for Spiral Gear
KD-127	Bottom Plate Screw	KD-152	Loch Nut for Crank Shaft
KD-128	Bottom Plate	KD-153	Shaft for Crank
KD-130	Oil Pad & Holder	KD-154	Washer for Crank Shaft
KD-131	Screw for Oil Pad	KD-155	Lock Nut for Ball Bearing
KD-132	Bell Crank With Pin & Bushing	KD-156	Ldler Gear With Bushing
KD-133	Screw for Cover	KD-157	L.H.Spiral Gear With Key
KD-134	Cover for Driver		

LOWER GEAR BRACKET MECHANISM



Part NO.	Name of parts	Part NO.	Name of parts
KD-102	Collar for Lower Screw Shaft	KD-168	Bushing for Shoe
KD-103	Thrust Ball Bearing	KD-169	R.H.Shoe
KD-104	Nut for Screw Shaft L.H.&R.H	KD-170	L.H.Shoe
KD-105	Washer for Screw Shaft L.H	KD-171	Set Screw for Sharpener Shoe
KD-106	Screw Shaft With Extension	KD-172	Stabilizer
KD-107	Spacer Tube	KD-173	Guide Back of Standard
KD-108	Stop Nut for Screw Shaft	KD-174	Washer foe Guide Back
KD-135	Right Hand Follower Nut	KD-175	Screw for Guide Back
KD-136	R.H.Square Shaft	KD-176	L.H.Slide With Pulley
KD-137	Left Hand folower Nut	KD-177	R.H. Slide With Pulley
KD-138	L.H.Square Shaft	KD-178	Neoprene Band
KD-138W	L.H.Square Shaft Washer	KD-179	Front Pulley for Belts
KD-158	Screw for Gear Cover	KD-180	Roll Pin for Pulley
KD-160	Grease Plug	KD-181	Spring for Pulley Slide
KD-161	Screw for Stabilizer	KD-182	Screw for Clamping Arm
KD-162	Lower Gear Bracket	KD-183	Clamping Arm for Shoe
KD-163	Screw for Slide Pilley	KD-184	Nut for Sharpener Shoe Screw
KD-164	Lower Gear Bracket Gear Cover	KD-185	Screw for Sharpener Shoe
KD-165N	Adjusting Nut	KD-186	R.H.Sharpener Shoe Spring
KD-165S	Adjusting Screw	KD-187	L.H. Sharpener Shoe Spring
KD-166	Gear on Screw Shaft	KD-188	Spring for Arm
KD-167	Intermediate Gear	KD-189	Abrasive Belts



Part NO.	Name of parts	Part NO.	Name of parts
KD-189	Abrasive Belts	KD-194	Knife Bolt Wrench
KD-190	Electric Corde Complete	KD-195	Screw Driver
KD-191	Knife	KD-196	Wrench For Shoe Set Screw
KD-192	Siot Cleaner	KD-199	Oiler